

NPS11T+ Installation Guide under Windows 2000

Note: We recommend that you print out a copy of the installation guide before proceeding.

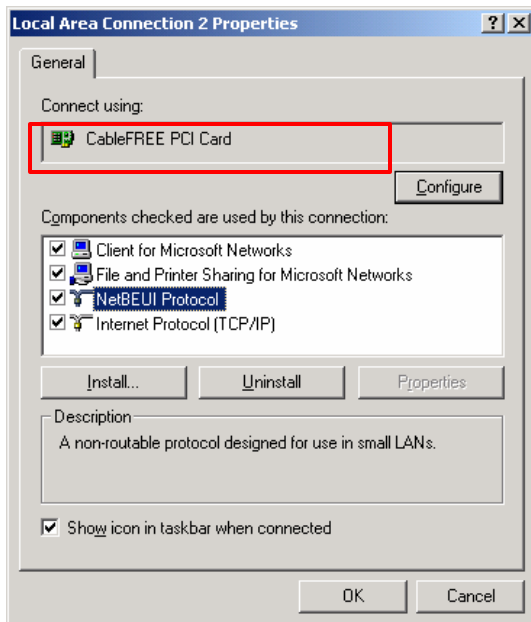
When installing the NPS11T+ under Windows 2000 you must know two things:

1. What is the Make and Model # of the Network Interface Card (NIC) you are using?
2. What protocol will you be using, **NetBEUI** or **IPX/SPX**? (One or the other, not both)

NOTE: Please UNINSTALL your existing printer drivers or software that you will be using with NPS11T+.

In the following installation Guide we will be using the following:

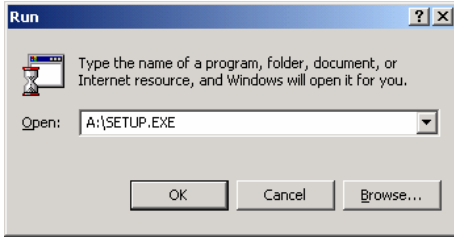
1. Network Interface Card: **CableFREE PCI Card**
2. Protocol: **NetBEUI**



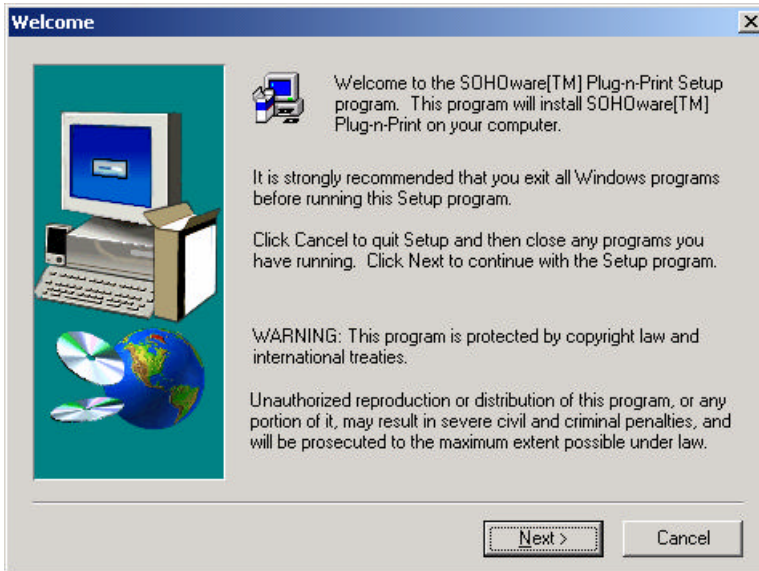
Note: If you do not have the Protocol "**NetBEUI**" listed, you will need to click on the "**Install**" button to add the necessary Protocol, to complete your Plug-n-Print installation.

Go to **Step 1** once you have determined the Network Interface Card and what protocol to use as shown in the above "*Local Area Connection Properties*" screen shot.

Step 1. Insert your SOHware Plug-n-Print diskette: Click on **“Start”** → click on **“Run”** → type in **“A:\SETUP.EXE”** → click **“OK”**

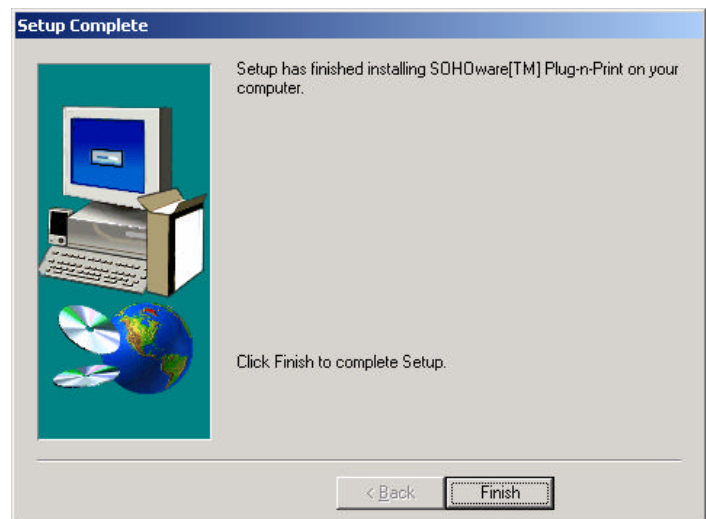
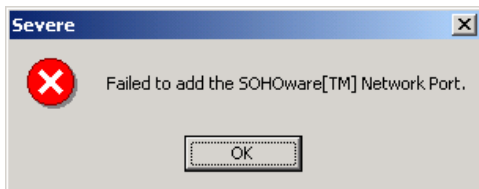


Step 2. Click **“Next”**

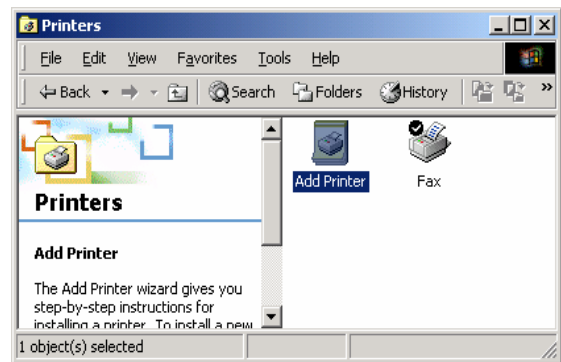
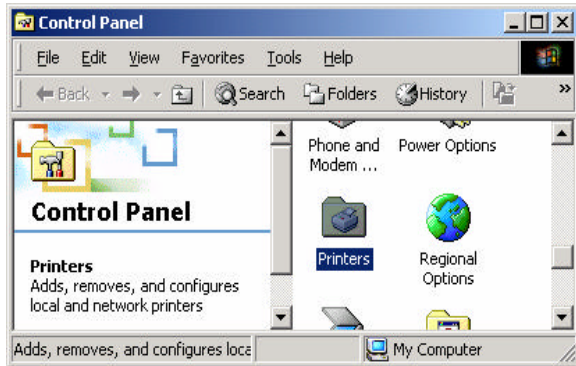


Step 3. If you encounter the following error message **“Failed to add the SOHware [TM] Network port”** click **“OK”** then click **“Finish”**. Repeat **Step 1 – Step 3** again.

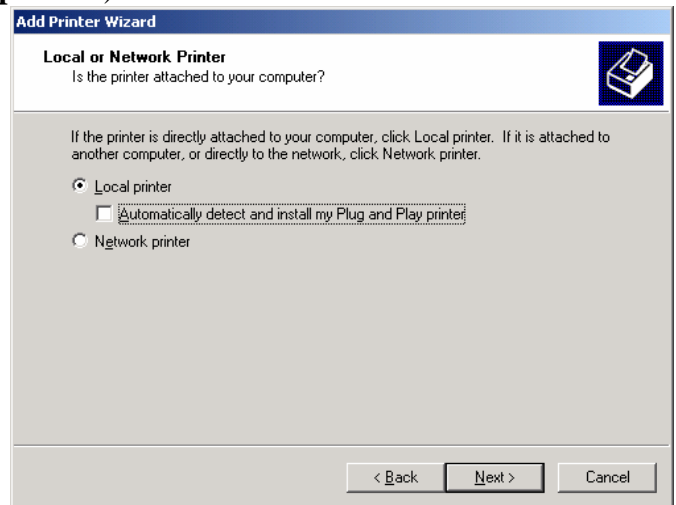
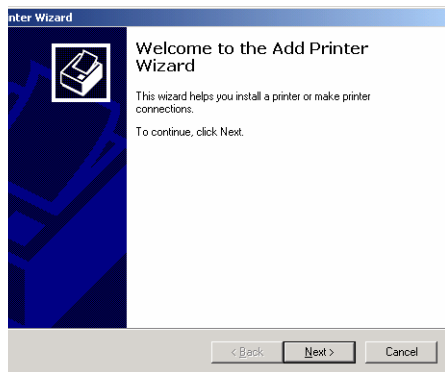
If you did **NOT** see the error message, Click **“Finish”** and proceed to **Step 4**



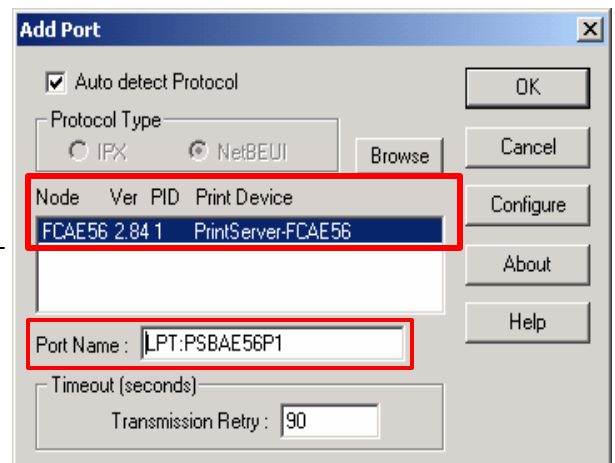
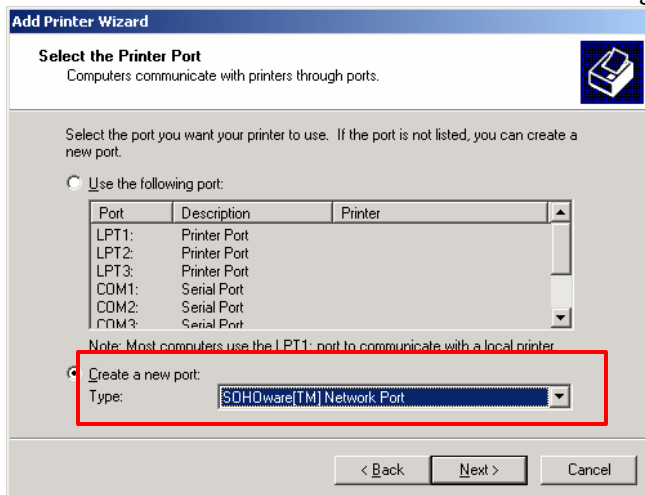
Step 4. Open up “Control Panel” and double click on “Printers”. → Double click on “Add Printer”



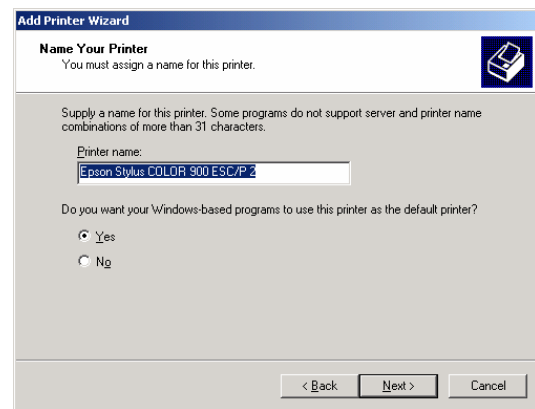
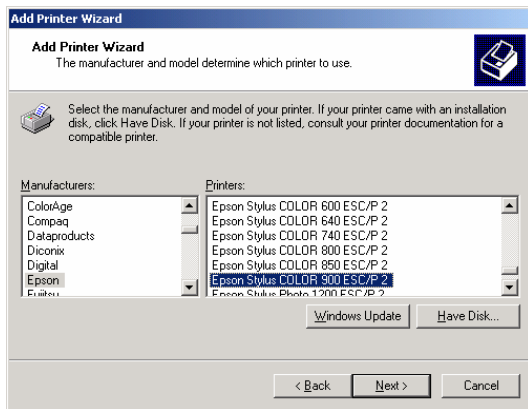
Step 5. Click “Next” then check “Local printer” (Do NOT check “Automatically detect and install my Plug and Play printer”)



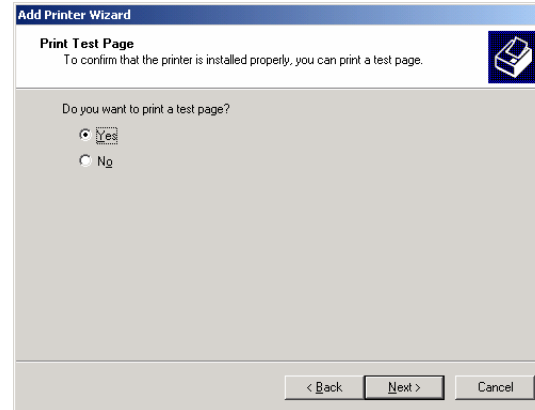
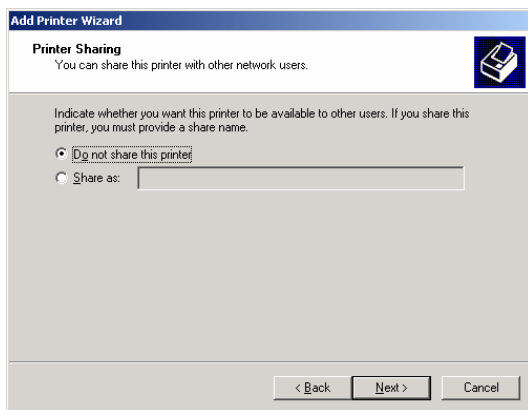
Step 6. Check “Create a new port :” and select “SOHOWare[™] Network Port” in the drop down menu. Click “Next”. **Note:** Please verify that you have VALID information in the “Port Name” field before clicking “OK” (i.e.: “LPT:PSBAE561”)



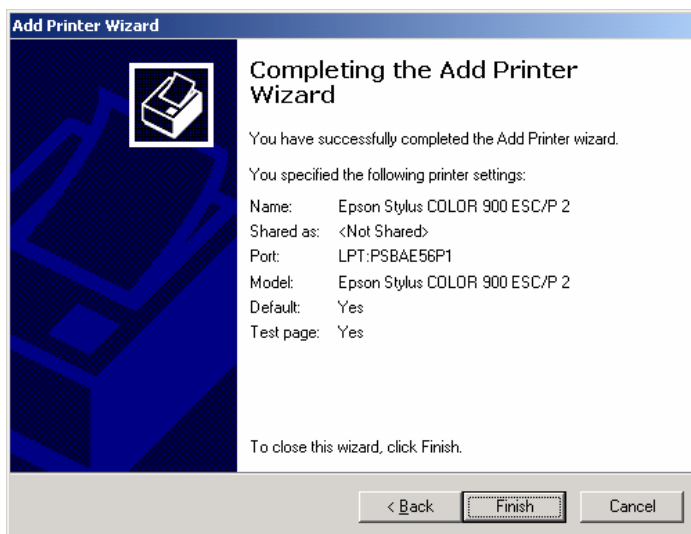
Step 7. Select the Manufacture of your printer and click **“Next”** or insert your Printer driver diskette and click **“Have Disk..”**. → Type in the Printer Name and/or click **“Next”**



Step 8. Click **“Next”** then check **“Yes”** to print a test page and click **“Next”**



Step 9. Click **“Finish”**



Note: If your printer prints a Test Page, you have successfully installed your Plug-n-Print.