



YOUR GUIDE TO BROADBAND
HIGH-SPEED INTERNET ACCESS
and
HOME NETWORKING



SOHOWARE MAKES NETWORKING PERSONAL AND BROADBAND EASY TO UNDERSTAND.

SOHOware, the company that invented consumer networking, always goes the extra mile to make it easy for customers to enjoy the benefits of sharing a broadband high-speed Internet connection at home or in the office.

That's why we've taken extra care to ensure that all our products meet the needs of our customers – and why our line of do-it-yourself home networking solutions are so easy to use and install.

It's also why we're committed to giving you as much information as possible to help you choose the broadband service and home networking solutions that are right for you.

This guide is intended to acquaint you with the various broadband home networking options that are available – and how you and your family can make the most of them.



TWO TERMS WE'LL REFER TO OFTEN THROUGHOUT THIS GUIDE.

What is a home network?

A home network allows multiple computers to share a high-speed Internet connection, as well as files, games, software programs, and peripherals (such as printers, scanners, external hard drives and digital cameras).

What is a broadband Internet connection?

In simplest terms, broadband is a high-speed Internet connection that allows you to access the Web up to 50 times faster than you can with a dial-up connection. Best of all, broadband means that your Internet access is always on and always available, so you don't have to tie up a phone line. That's because your connection to the Internet is via a special high-speed modem – which is supplied by a broadband service provider.

Broadband consumers can enjoy video conferencing, interactive games, music downloads and even voice applications over the Internet.

THE MANY BENEFITS OF BROADBAND.

With broadband home networking products like those offered by SOHOware, multiple computers in your home or office (laptops, desktops or both) can all share a single high-speed Internet connection.

This means that multiple users can all enjoy the benefits of the Web at the same time. Since a broadband connection is up to 50 times faster than dial-up, you can download software, music and streaming video in no time. You can even play games together online – at the same time.

HOW TO GET A BROADBAND CONNECTION.

Broadband is available from local cable TV companies, local phone carriers, and DSL providers. You will need to order broadband service from one of these sources. As part of the set-up for broadband service, you will receive a high-speed modem which is your “always-on” connection to the Internet. Here are a few criteria to help you choose the right broadband Internet service provider for you:

- **Availability of cable or DSL Internet service in your area**
- **Total costs involved – including installation and monthly service charges**
- **Backlog – how long is the waiting list for the broadband Internet service provider to connect you?**

- **The quality of customer service offered**
- **Does the broadband service provider offer a complete solution (including the hardware and service) that allows you to share a single broadband Internet connection in your home or office?**

ARE THERE ANY RISKS INVOLVED WITH A BROADBAND CONNECTION?

Yes, one. Unlike traditional dial-up connections, broadband means that you are always online – leaving the data on your computers more susceptible to security risks.

But there are a number of easy ways to avoid such risks. You can purchase personal firewall software to load onto your computers. Or you can purchase hardware to accomplish the same thing. If you choose hardware, an excellent choice is the SOHOware **BroadGuard™ Secure Cable/DSL Router**. **With it**, you can rest assured that the data on your home network will be protected.

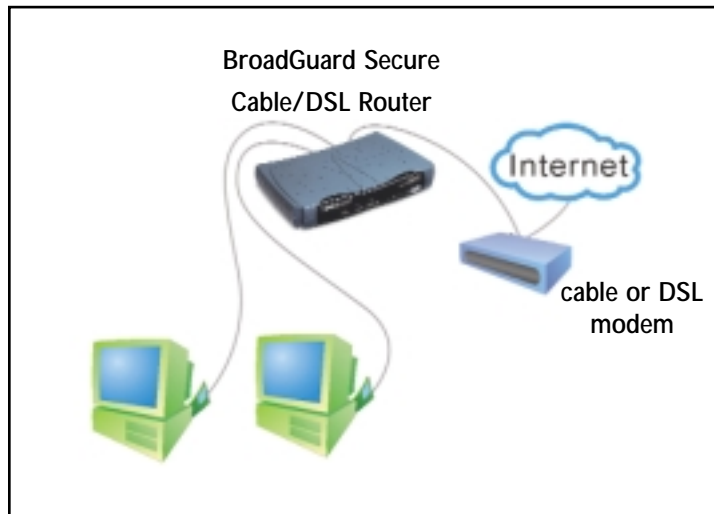


ONCE YOU GET YOUR BROADBAND
INTERNET CONNECTION, YOU'LL WANT
TO SHARE IT. HERE'S HOW.

If you want to share the excitement of high-speed Internet access with everyone at home or in the office, you will need to network.

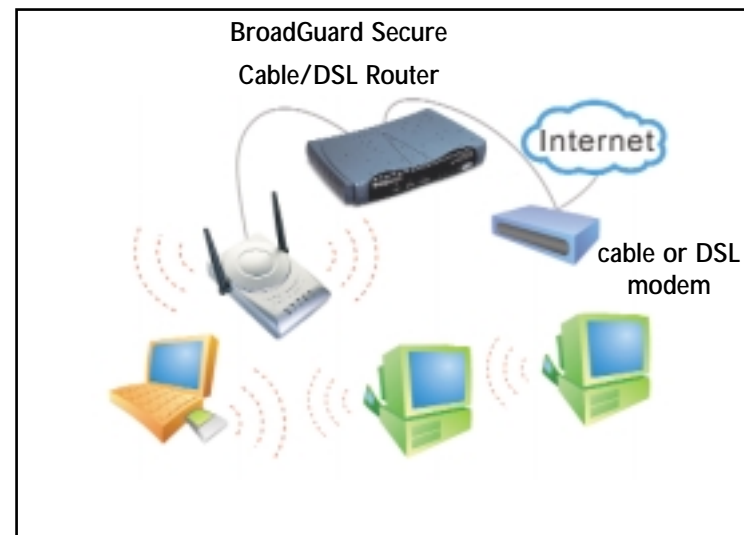
To do that, you need to connect your computers to what is called a **BroadGuard Secure Cable/DSL Router**. **BroadGuard** is the core of any secure broadband networking solution, whether it's wired or wireless.

A WIRED NETWORK



If you are networking computers in different rooms or on different floors, you might want the convenience of a wireless solution. It gives you greater flexibility to move your computers anywhere you want in your home or office (and still have them be networked).

A WIRELESS NETWORK



Of course, you can also mix and match wired and wireless technology based on your specific needs. SOHOware products give you that flexibility.

**YOUR FIRST BIG STEP.
BROADGUARD SECURE CABLE/DSL ROUTER**



**BroadGuard Secure
Cable/DSL Router
#NBG800**

The core of any home networking solution should be SOHOware's BroadGuard Cable/DSL router. BroadGuard allows you to share a single high-speed Internet connection over multiple PCs like other routers. But unlike any other broadband router, it offers professional-level "always on" advanced fire-wall protection secure against sophisticated hacker attacks (included the unique Hacker Alert messaging feature) and three types of access control to restrict access to inappropriate web content.

**ALONG WITH BROADGUARD, HERE'S WHAT YOU'LL
NEED FOR A WIRED NETWORK.**

If your computer has an Ethernet slot available for networking, you'll need:

10/100 Fast Ethernet PAK
Includes 25 ft. cable
and a 10/100 PCI Card
#SFE100B



If you already have the cable:

**10/100 PCI Card
#SFA110A
(shown)**

For every notebook or laptop computer on the network, you'll need:

**10/100 32-bit
PCMCIA Adapter
#NCB100**



If your computer has a USB port for networking, you'll need:

**NUB100 10/100
USB Adapter
#NUB100**

TO EXPAND YOUR NETWORK, YOU'LL NEED:

Hub - If you want to expand to more than five computers, this connects to BroadGuard so that you can further expand your network.

5-Port 10 Base T Hub
for general networking use
#ND4205

or for more demanding applications, we suggest

5-Port or 8-port 10/100 Autosensing Hub
#NDH305 or NDH308
(shown)



Switch - This is like a hub, the difference being that a switch allows each computer to be given its own dedicated bandwidth, so there are no bottlenecks when you're downloading or sharing large files. Connect the switch to BroadGuard and it acts as a small office minibackbone.

5-Port 10/100 Switch
#NSH510/A

or for larger networks,

8-Port 10/100 Switch
#NSH812/A

HERE'S WHAT YOU'LL NEED FOR A WIRELESS NETWORK:

CableFREE NetBlaster II- for your 11 Mbps wireless networking. This acts as a wireless hub for your network. Connect it to BroadGuard and you have the freedom to surf the Web securely from anywhere in your home or office.

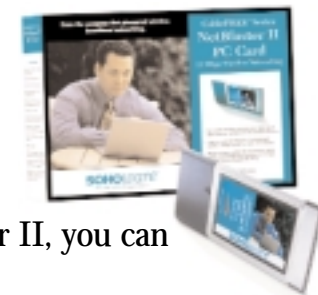


CableFREE NetBlaster II Wireless Hub
#NCP600

With the CableFREE NetBlaster II, you'll need a wireless adapter for each computer that's to be connected to your wireless network:

#NCP110- 11 Mbps Wireless PCMCIA adapter for laptops

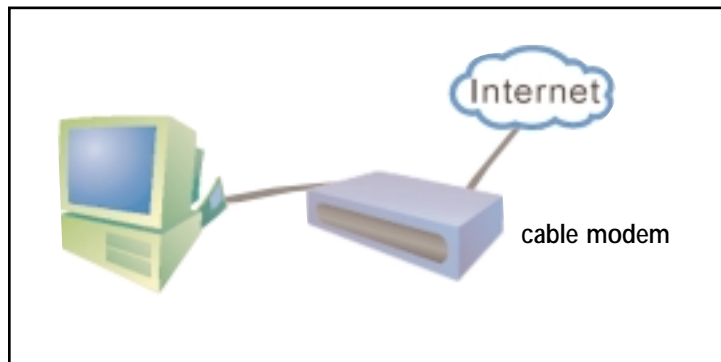
#NCP130 - 11 Mbps Wireless PCI adapter for desktops



And with the NetBlaster II, you can add up to 10 computers.

A TYPICAL HOME NETWORK:

Carl and Sharon Mitchell just got a broadband high-speed Internet connection through their local cable company that connects to the one desktop computer in their bedroom. They wanted to be able to talk on their one phone line and get on the Internet at the same time, as well as not have to wait a long time for pages to download.



NOW THEY WANT TO SHARE BROADBAND WITH THEIR KIDS:

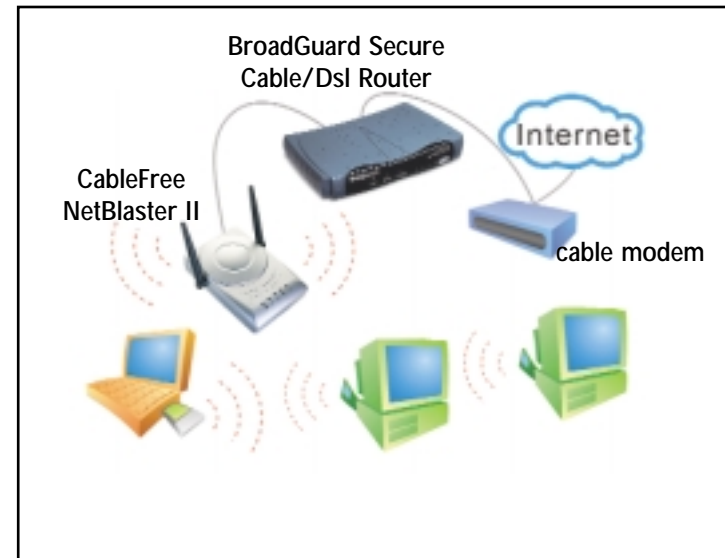
Carl and Sharon want to purchase laptop PCs for their two children who just graduated from 10th grade and 11th grade. That way, they can share the

one Internet connection to do their school work. In addition, Carl does not want to run wiring from his bedroom upstairs to the kids' rooms. So a wireless solution is the way to go. The Mitchells will need to get:

1 BroadGuard

1 **CableFree NetBlaster II** - connected to BroadGuard.

2 **Wireless PCMCIA adapters** - one for each laptop computer



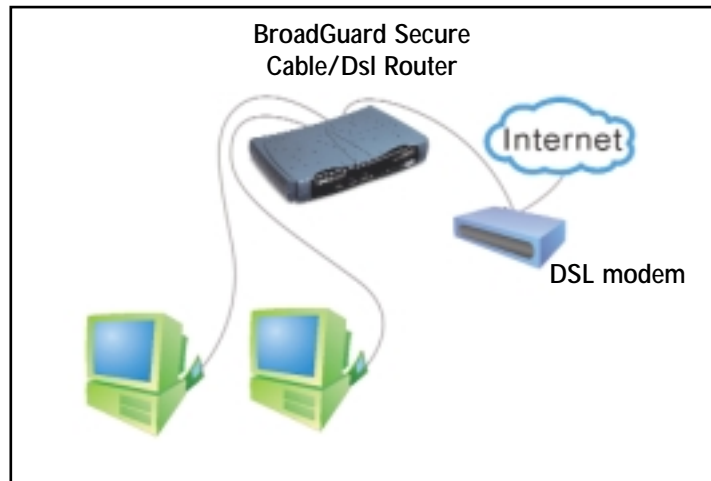
A TYPICAL WIRED SCENARIO:

Bob and Ellen both work at home. They share an office, equipped with two desktop PCs, one printer, one scanner and a high-speed DSL Internet connection. The fact that the computers and peripherals are in the same room make this an ideal scenario for a wired solution.

Bob and Ellen will need:

1 BroadGuard connected to a **high-speed DSL modem**

2 Fast Ethernet PAKs for the desktop computers (each PAK includes PCI card and cable)



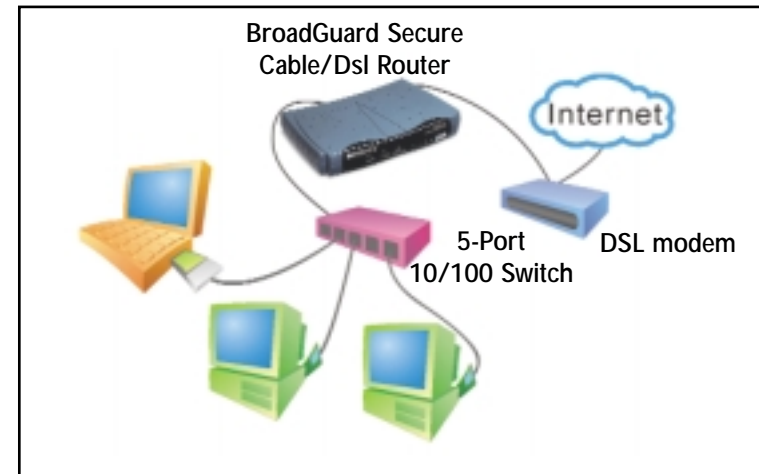
NOW LET'S EXPAND ON THIS SCENARIO:

Bob is thinking about purchasing a notebook PC and may want to upgrade the network later to be able to transfer large files from the office. If so, he will need to add:

1 10/100 CardBus PCMCIA Card for connecting the laptop

If they want to work with large files or graphic-intensive applications without slowing down the network, they should add:

1 5-Port 10/100 Switch - (connects to the DSL modem and to BroadGuard)



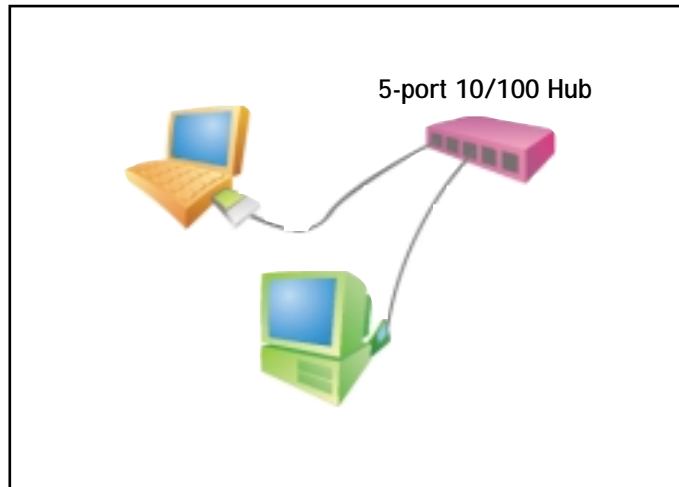
A TYPICAL WIRELESS SCENARIO:

Stephens Design, a three-person graphic design firm, currently has a simple network with two PCs (one desktop and one laptop) and other peripherals. The firm currently has:

1 5-port 10/100 autosensing Hub

1 Fast Ethernet PAK for the desktop computer (PAK includes PCI card and cable)

1 10/100 CardBus PCMCIA Card for the notebook computer.



The design firm just purchased a DSL broadband connection, which they all want to share. The owner, John Stephens, likes the idea of using wireless networking technology when he adds more computers.

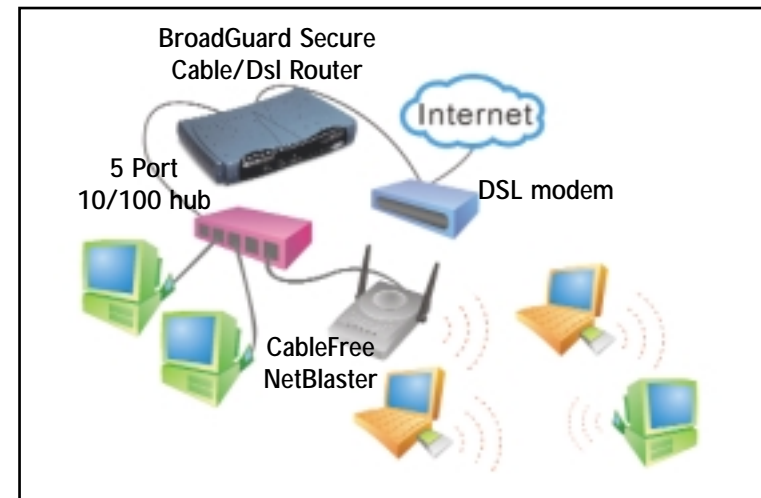
He will need to purchase:

1 BroadGuard

1 CableFREE NetBlaster II

Wireless PCMCIA adapters for every new notebook computer

Wireless PCI adapter for every desktop PC



WE WANT TO HEAR FROM YOU.

If you have general questions or comments about any of the information in this guide, we want to hear from you.

We also want to hear your stories and feedback on how you are using your home network – email us at mystory@sohoware.com.

If you have any specific questions about SOHOware products as they relate to your particular needs, call **1-800-632-1118, ext. 2828** and one of our customers representatives will be happy to assist you.

Or you can visit us anytime online at the SOHOware Web site, www.sohoware.com.

If a particular product mentioned in this guide is not available at your computer store, ask a sales representative if you can order it. Of course, you can always buy any of our products direct from us online (www.sohoware.com).

One thing's for sure: once you get a broadband high-speed Internet connection in your home or office – and a SOHOware network to share that connection – you'll wonder how you ever lived without it.

We always like to hear from you.

You can write us:

3050 Coronado Dr. Santa Clara, CA 95054



call us:

1-800-632-1118, ext. 2828



or visit us online:

www.sohoware.com

To purchase products online:

www.buysohoware.com

To email us your feedback or success story:

mystory@sohoware.com

