



BWAP02O-48

IEEE 802.11a/b/g High-Power Outdoor WiFi AP/Bridge with Type-N External Antenna Connectors and Metal Casing

Contact: Sales@sohware.com Website: www.sohware.com

The BWAP02O-48 is High-Power AP / Bridge /Multiple Bridge/ AP Client is designed for connecting wireless communication devices together to from a wireless network, which operates in the 2.4Ghz or 5.8Ghz band compliant with IEEE 802.11a/b/g Standard. BWAP02O-48 supports a data transmission rate up to 54Mbps, which is best suited for Enterprises, or off-site location required LAN or Internet access without effort of networking wired cabling issue.

For high level deployment, BWAP02O-48 could also support 12VDC Power over Ethernet feature to create more wireless backbone networks without the environment limitation. It also provides advance security enhancement with up to 128-bit WEP, WPA, WPA2, RADIUS MAC authentication.

Features:

IEEE 80.11a, 802.11g and 802.11b standard compliant with special channels support from 2.4GHz and 5.8GHz

Support operation mode Access Point, Bridge, Multiple Bridge/AP Client Function.

Support data rate for 54Mbps

Strong network security with WPA, WPA2 and 64/128 bit WEP encryption, RADIUS

MAC authentication and MAC Address Filtering

Easy Web access to control

Adjustable Output Power Level

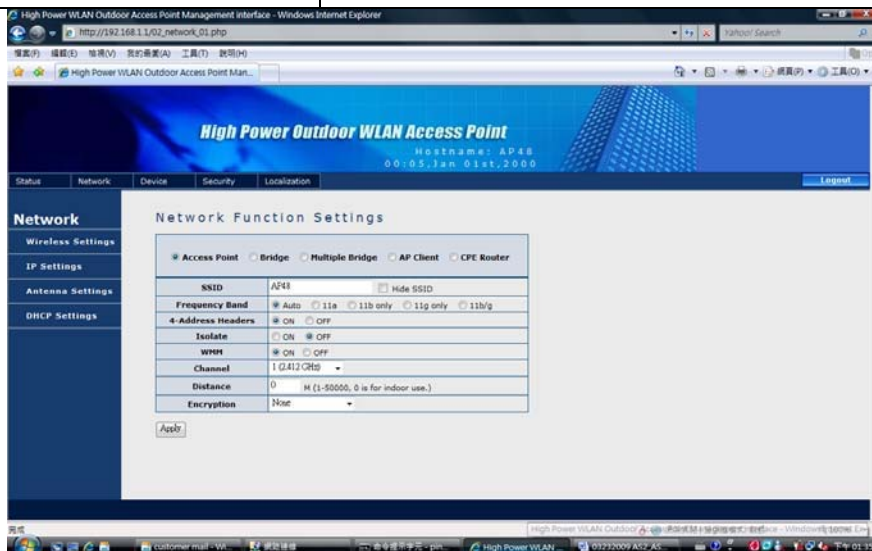
Support PoE for easy install

Hardware watchdog

Specifications

Frequency	802.11a 5180 - 5825 MHz 802.11g 2412 - 2472 MHz 802.11b 2412 - 2484 MHz
Modulation	802.11a/g OFDM (64-QAM, QPSK, BPSK) 802.11b DSSS (DBPSK, DQPSK, CCK)

Operating Channels (For Standard Wi-Fi only)	802.11a 13 Channels (USA) 19 Channels (Europe) 4 Channels (Japan) 802.11b/g 11 Channels (USA) 13 Channels (Europe) 14 Channels (Japan)
Transmit Power	5.8Ghz : 300mW 2.4Ghz : 650mW
Receiver Sensitivities	802.11a -92 dBm @ 6-24 Mbps -80 dBm @ 36 Mbps -76 dBm @ 48 Mbps -72 dBm @ 54 Mbps 802.11g -92 dBm @ 6-24 Mbps -80 dBm @ 36 Mbps -76 dBm @ 48 Mbps -72 dBm @ 54 Mbps 802.11b -96 dBm @ 1 Mbps -95 dBm @ 2 Mbps -93 dBm @ 5.5 Mbps -92 dBm @ 11 Mbps
LAN	PoE port with 10/100 Ethernet auto negotiation, auto-MDI-X Full/half duplex
Monitor	Hardware Watchdog
Security	WPA, WPA2 and 64/128 bit WEP encryption, RADIUS
Power	110V AC ~ 220V AC, output 12VDC
Networking	802.11a & 802.11g/b compatibility



PS. The issuing party reserves the right for any modification and updating of the specification without any prior notice.