

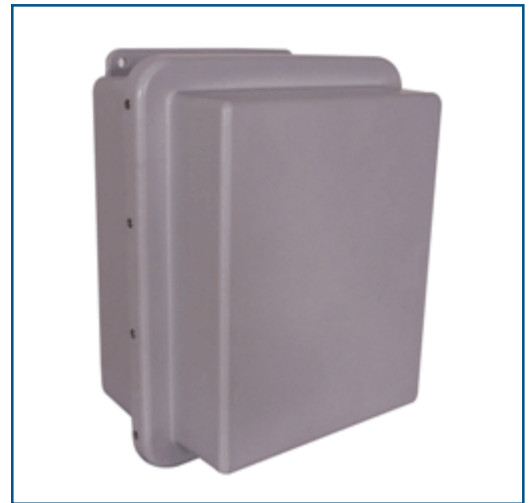
AeroCell™ (WLAG3800)

NLOS Broadband Wireless Access Solution

A versatile multi-band solution for Service Providers that offers the advantage of Non-Line of Site deployment in Last Mile and Campus wireless networks.

The AeroCell WLAG3800 is a Broadband Wireless Access (BWA) concentrator that combines high performance with extended range technology to provide NLOS (Non Line of Sight) versatility in varied terrains. Configurable to operate as a Point-to-Multipoint (PMP) system or Point-to-Point (P2P) system for outdoor wireless applications.

The WLAG3800 is easy to install, plug and play, and operationally robust. AeroCell is designed for use by Service Providers to deploy Last Mile Direct Broadband Access and Enterprise Campus wireless distribution networks where Line of Site is not practical or possible. Based on a dual radio platform, the WLAG3800 supports 5 GHz backhaul links and 2.4 GHz client access connectivity.



Features and Benefits

Non Line-of-Sight (NLOS) deployments - Enhanced receiving sensitivity provides greater deployment versatility to address natural and man-made terrain barriers.

Advanced RF for Extended Range - Supports dynamic adaptive modulation in both upstream and downstream traffic that enables NLOS mode at up to 3 miles for PMP deployments.

108 Mbps Dual Radio Design - Second radio enables scalable P2P and PMP deployments with dedicated bandwidth for Client connectivity and backhaul trunking.

2.4 GHz and 5 GHz Support - Standards based License-free spectrum that enables simultaneous 11b/g Client access and 11a wireless backhaul.

Wireless Infrastructure Operating Solution (WIOS) - A network management system providing complete subscriber and network management for the Service Provider, including per user link QoS control.

Outdoor Compliant Package - Plug and Play ready for deployment complete with integrated PoE, all-weather packaging, mounting accessories and multiple antenna options.

Specifications

Network

Topologies	Point to Point (P2P), Point to Multi-Point (PMP)
Capacity	Up to 20 concurrent CPE Clients per base station cell

Wireless Performance

Range	Enhanced Non-Line of Site (NLOS) up to 3 miles Point to Point Line of Site (LOS) up to 18 miles
Data rates	11b/g mode: 1 - 54 Mbps 11a mode: 1 - 54 Mbps Turbo a/g: up to 108 Mbps
TCP/IP throughput	PMP: 3 - 7 Mbps P2P: up to 10 Mbps
Output power	0 - 25 dBm with backoff
Receive Sensitivity	11b/g mode: -91dBm @ 1 Mbps, -72dBm @ 54 Mbps 11a mode: -91dBm @ 6 Mbps, -72dBm @ 54 Mbps Turbo a/g: -88dBm @ 12 Mbps, -69dBm @ 108Mbps

Radios

Standards	IEEE 802.11b/g, 802.11a
Frequency range	11b/g: 2.3-2.5 GHz 11a: 4.9-5.85 GHz
Channels	11b/g mode: 11 channels; 3 non-overlapping 11a mode: 13 channels
Modulation	OFDM - BPSK/QPSK/16QAM/64QAM DSSS - CCK

Management

Subscriber	Subscriber interface management Subscriber services management
Quality of Service	IEEE 802.11e (EDCF)
Remote	Wireless Infrastructure Operating Solution (WIOS) SNMP: MIB 1&2, Proprietary MIB CLI Telnet
Firmware	FTP/TFTP support

Security

Authentication	802.1x and AAA RADIUS
Encryption	64 / 128bit WEP WPA2 / AES-CCM (802.11i) WPA / TKIP

Network

Interface	IEEE 802.3u, 10/100 Mbps (RJ-45)
Protocols	Bridging and Routing

Operating Environment

Operating Temp	0 - 70°C (32 - 158°F)
Humidity	0-90% non-condensing

Physical

Dimensions	10.75 x 10.75 x 4 inches, 5.6 lbs; mast mounting for 1 - 2.25 inch dia.
Power	Adapter: 100-240 VAC PoE: 802.3af
Regulatory	FCC Part 15a, UL (1950)

(c) 2005, SOHware, Inc. All rights reserved.
Product image and specifications are subject to change without prior notice.

SOHware[®]

Your Partner For SMB Networking. SOHware, Inc. Headquarters 3050 Coronado Dr.
Santa Clara, CA 95054 Tel 1.800.632.1118 Fax 1.408.565.9889 www.sohware.com