

# BroadTaIX™ VIP50

## Analog Phone Adapter with PoE

The BroadTaIX™ VIP50 allows analog phones to connect to a SIP network extending the benefits of a converged VoIP solution to include existing telephony equipment investments.

The VIP50 is a multi-function phone adapter that converts analog telephony equipment to IP based networks. For legacy business networks, this extends the useful life of existing phone and conferencing devices as the business migrates to a converged voice and data network solution. The VIP50 also allows remote business users to utilize their existing home or remote office phones on the same IP network.

An intuitive Web interface allows the Analog Adapter to be quickly installed and configured. As part of the BroadTaIX™ VoIP solution, the VIP50 can be automatically configured by the VIP2000 IP-PBX, whether locally or remotely.

The BroadTaIX™ VoIP solution can support a centralized or distributed network where remote users connect to the central PBX via the internet. The VIP50 includes ports for LAN or direct-to-Internet (WAN) to connections.



### Features and Benefits

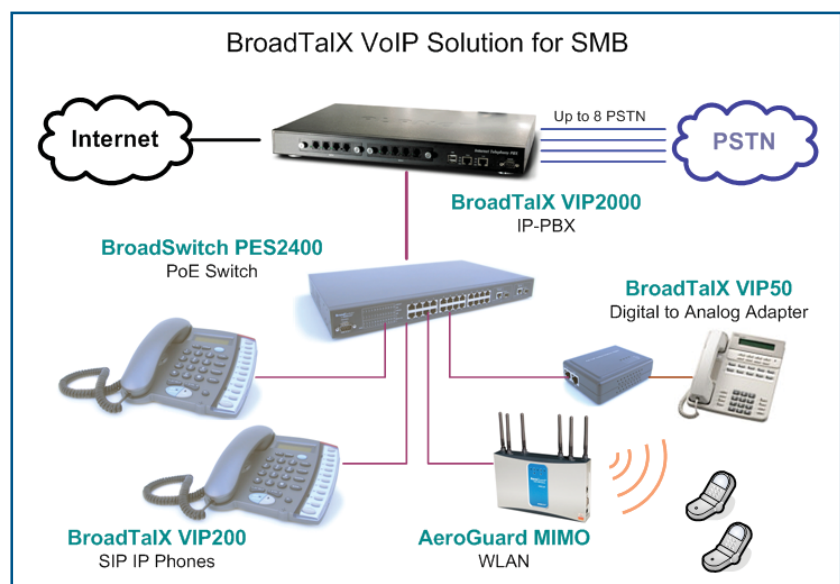
**Simple to Install and Manage** - Configuration can be performed in minutes via the Analog Adapter's Web interface, and the BroadTaIX™ IP-PBX provides additional scalability with auto-configuring options.

**Internet Ready** - Includes DHCP client and PPPoE support to simplify setup of remote stations that connect to the IP-PBX from distributed office locations.

**Open Standards** - compliant to SIP 2.0 for local or remote integration with the BroadTaIX™ VIP2000.

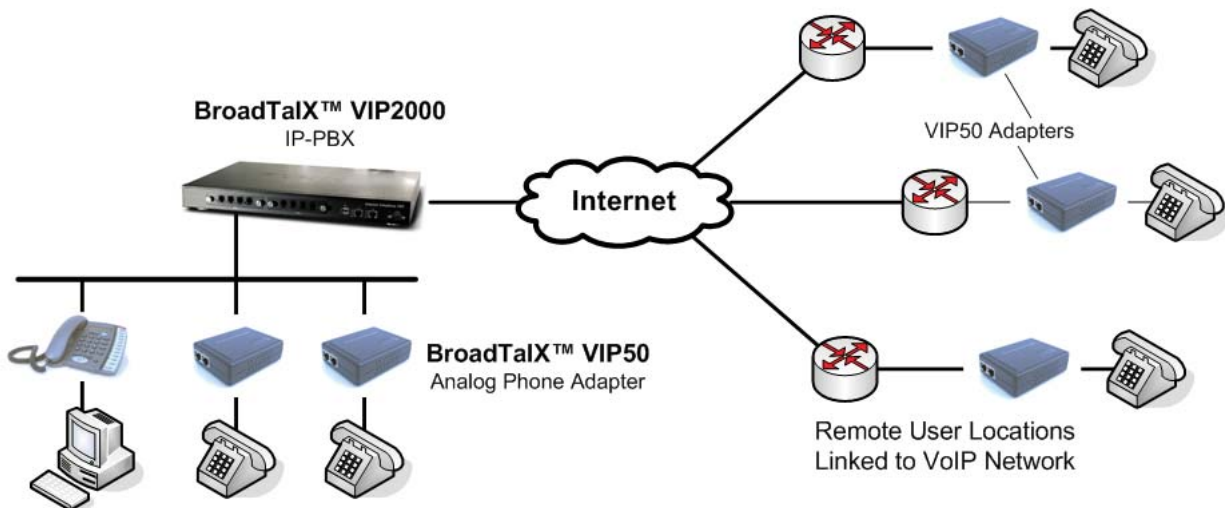
#### Key Features

- Dual Ethernet interface for LAN or WAN (Internet) connections.
- Web based setup and configuration.
- Power over Ethernet (PoE) support.
- Local and remote auto-configuration by VIP2000 IP-PBX.
- Saves existing analog equipment investment.
- SIP 2.0 compliance.



## Multi-Functional Role of Analog Adapters

Supports Local or Remotely Located Analog Equipment



## Specifications

Model	VIP50 Analog Phone Adapter
Standards	SIP 2.0, SIP digest authentication (MD5)
Voice codec	G.711, G.729A/B, G.723.1 (6.3k/5.3k)
Voice Standards	Voice Activity Detection (VAD) Comfort noise generation (CNG) Dynamic jitter buffer Acoustic echo cancellation (AEC) Line echo cancellation - G.165 (LEC)
Network Access	Static IP PPPoE DHCP
Management	Web (HTTP) Key pad Auto-configuration (VIP2000 IP-PBX)
Ethernet Interface	Two - 10/100Base-Tx (RJ-45) - LAN or WAN
Analog Interface	One - RJ-11
Environment	Operating Temperature: 0 - 40°C (32 - 104°F) Humidity: 10-95% non-condensing
Dimensions	170 x 220 x 60mm (6.7 x 8.7 x 2.4 inches)
Power	External Adapter: 100-240VAC, 50/60Hz (12VDC output) Power over Ethernet ready (802.3af)
Protocols	SIP 2.0 (RFC3261), TCP/IP, UDP/RTP/RTCP, DNS, DHCP, HTTP, ICMP, ARP, NTP/SNTP, FTP PPP, PPPoE, 802.3, 802.3u, 802.3af
Regulatory	FCC, CE

(c) 2006, SOHware, Inc. All rights reserved.  
Product image and specifications are subject to change without prior notice.

**SOHware**

Your Partner For SMB Networking. SOHware, Inc. Headquarters 3050 Coronado Dr.  
Santa Clara, CA 95054 Tel 1.800.632.1118 Fax 1.408.565.9889 www.sohware.com