

AeroGate™ WLH9000

Access Service Gateway

The AeroGate™ WLH9000 is a high performance subscriber management gateway for Enterprise and Service Provider networks supporting thousands of users. The WLH9000 is ideal for large multi-tenant (MTU) properties, including premium hotels, resorts, apartment and condominiums where public wired and wireless access to high speed Internet services is deployed. The rack mount appliance includes dual WAN aggregation and Gigabit network support.

Designed to integrate subscriber and guest services over wired and wireless networks, the AeroGate™ family offers centralized management of the AeroGuard™ WLA861 access point from SOHware, and additionally supports 3rd party wireless APs with IP device monitoring that allows Service Providers to effectively deploy and manage a wireless public access network.



AeroGate™ Access Service Gateways provide complete acquisition, authentication, session, and billing control including internal branding support for guest login. Integration with back office AAA solutions is supported through RADIUS and PMS. Remote management is supported with detailed monitoring, reporting, and alerting to the NOC.

Features and Benefits

High Performance Platform - Pentium-based IPC supports up to 1500 concurrent users with a Firewall throughput over 200Mbps to assure bandwidth availability for class-of-service deployments.

Network Flexibility - Layered routing options include highly configurable NAT, VLAN and subnet management that insures flexibility for adaptation to existing networks, whether at the customer premise or Service Provider head-end.

WLAN Centralized Management - Can be deployed in combination with the AeroGuard™ WLA861 access point for centralized control and management of the WLAN, allowing scalable monitoring and configuration of multiple APs (up to 120 WLA861 devices can be managed).

Complete Accounting and Billing - Supports multiple local or remote authentication methods for managing up to 5000 on-demand accounts. Multiple account profiles are configurable by role or policy to support both amenity and fee based user access models.



AeroGuard™ WLA861 Access Point

Session and Bandwidth Management - Provides full control over service level bandwidth shaping, and session usage by time or bandwidth to track the status of each account.

Customizable Marketing Features - Allows corporate or Service Provider brand customizing of login and logout pages, redirection of Web browser, and access to Walled Garden.

Business-class Security - Provides integral standards-based authentication and encryption that ensures secure end to end communications of wired and wireless networks.

Features

Capacity by model: **WLH9000**

- Concurrent users 1500
- Local accounts 5000
- On-demand accounts 2000

User Services Support

- IP Plug and Play (iPnP) of client IP, DNS or proxy
- Email support: seamless SMTP redirection
- VPN pass through: supports IPSec, PPTP

User Login

- Name and password with secure Web session (SSL)
- User Email notification with login hyperlink
- Windows domain transparent login support
- Multiple login support per account

User Authentication Options

- Internal account database for local authentication
- External server support: RADIUS, LDAP, POP3, NT
- PMS interface (Micros Fidelio)

Access Control Options

- Role-based and policy-based
- Policy options: firewall, routing, schedule, bandwidth
- MAC address filtering
- Black list

Session Accounting

- Limit by time and bandwidth usage (hours / MB)
- Idle timer and expiration control
- On-demand billing profiles: stores up to 10 profiles
- Credit card gateway (authorize.net) - Available Q2-2006
- PMS interface (Micros Fidelio)

Marketing Support

- Customize login/logout screens (internal Web server)
- IP redirection at login
- Walled garden (limited Browser access)

Networking

- Modes: bridge, router, NAT
- WAN: Static IP, DHCP (server or relay), PPPoE, PPTP client
- WAN aggregation: 802.3ad load sharing aggregation
- Routing: IP and Port redirection
- Server mapping: DMZ and Virtual Server
- VLAN tagging (802.1q)
- Bandwidth shaping: bandwidth allocation per account

WLAN Management (for AeroGuard™ WLA861 access point)

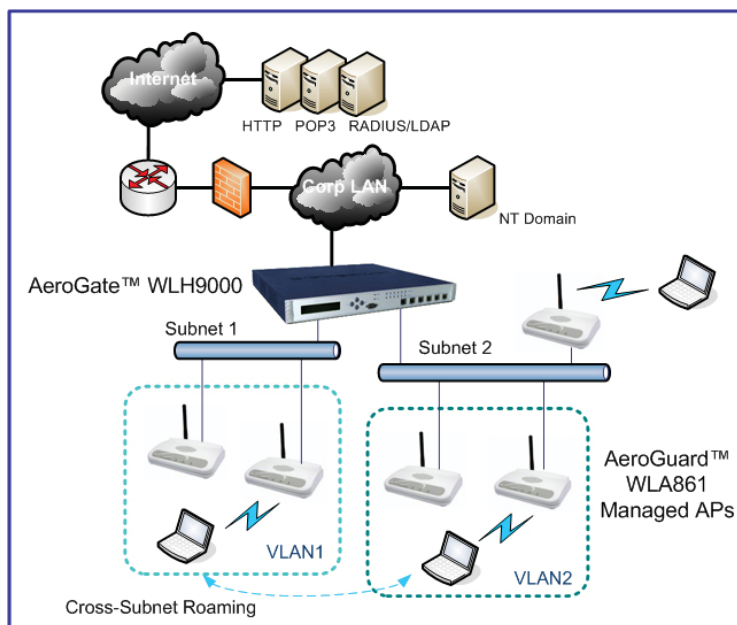
- Access Point Support: 120 APs
- Integrated HTTP / SNMP interface
- Auto-discovery of APs
- Allow / disallow authorization on an AP basis
- Configuration profile store and manage
- Alarms and status reports per AP
- Browser based configuration file / firmware management
- Associated clients status list
- 3rd party AP / Bridge device IP monitoring (Ping utility)

Security

- SSL secure Browser support
- 802.1x authentication: EAP-MD5, EAP-TLS, CHAP, PEAP
- SSH and SNMPv3 secure remote management
- Firewall: packet filtering rules, DoS prevention

Management

- Session control by time or bandwidth usage
- On-screen and printable billing reports
- Reports and Alerts: traffic history by account, WAN status
- SNMPv3, Telnet, Syslog
- Configuration file backup and restore
- NPT time synchronization



Hardware Specifications

Platform

- CPU: Pentium 4 - IPC
- Throughput: 200 Mbps (LAN to WAN)

Protocols

TCP/IP, NAT/PAT, DHCP (client & server), UDP, DNS, DDNS, PPPoE, TFTP, 802.1q

Network Standards

IEEE 802.3, 802.3u, 802.3z

Physical Ports

- WAN: Two - 10/100/1000BaseTx (RJ-45)
802.3ad aggregation
- LAN: Three - 10/100BaseTx (RJ-45)
One - 10/100/1000BaseTx (RJ-45)
- Console: One - RS-232 (DB-9)

Indicators (LED)

- One each: Power, Status
- Per port: Link, Activity, 10/100/1000
- LCD panel: 20 character / two line

Power Requirements: 100 - 240 VAC, 50/60 Hz
On/Off switch

Physical

- 426 x 413 x 44 mm (16.7 x 16.3 x 1.7 inches)
- 1U rack mount (19 inch)
- Net weight: 11.4Kg (25.1 lbs)

Environment

- Operating temperature: 0-45 deg C (32-113 deg F)
- Humidity: 10 - 90%, non-condensing

Certifications: FCC Class B, CE

Warranty: 1 year, limited

(c) 2005-2006, SOHware, Inc. All rights reserved (Ver. 2.0).
Product image and specifications are subject to change without prior notice.

SOHware®

Your Partner For SMB Networking. SOHware, Inc. Headquarters 3050 Coronado Dr.
Santa Clara, CA 95054 Tel 1.800.632.1118 Fax 1.408.565.9889 www.sohware.com